



**Wolverhampton
Girls' High School**



Sixth Form Prospectus

EXCELLENCE | COMMUNITY | OPPORTUNITIES

Welcome To Wolverhampton Girls' High School.

We have a long and established history of providing outstanding education for girls for over 100 years. We pride ourselves on our traditions, but we do not stand still, we are striving for continuous improvement. There is no charge or cost related to the admission of a student to the school and we welcome students from within the City of Wolverhampton and beyond.



We offer a broad and rich curriculum where all students are encouraged and supported to achieve their personal best in all aspects of school life. Our combination of high expectations and support, tailored to meeting individual needs, leads to academic excellence. Students are highly motivated to learn and personalised learning lies at the heart of our provision.

The school is respected as one of the best state schools in the country, regularly achieving examination results which place it near the top of national league tables. This success has also been recognised by Ofsted, with the school achieving four successive "Outstanding" inspections.

Whilst academic achievements are an important part of life at WGHS, students enjoy the wide range of other opportunities. These include participation in the thriving House system; and opportunities in the fields of sport, music and drama. Sixth Formers are an integral part of the school, taking on various leadership posts and acting as role models for the younger students. There is a plethora of activities for the students to engage in from leading whole school events; to organising charity fundraising activities; participating in debating competitions and enjoying expeditions abroad.

Our team of dedicated staff all ensure that students are well supported to achieve academic success, within a caring community. Pastoral care is exceptional, with a focus upon student wellbeing. High quality advice and support is provided to ensure that students are well informed to make their choices when preparing for higher education and their future careers. The school has an impressive record of students going on to read a variety of degree courses including Medicine and Law; and at some of the best institutions in the country including Oxford and Cambridge, alongside securing prestigious higher level apprenticeships at companies such as KPMG.

The school's motto: *Ludus Supra Praemium*, emphasises the value of taking part as a member of the school community. Our girls are encouraged to develop skills for life long success in terms of understanding themselves as learners and developing as responsible citizens, demonstrating care and respect for all members of the community. We focus on the importance of encouraging each of our students to aim for their personal best.

**"Teaching is excellent
and very focused on
students achieving
academic excellence."**

OFSTED



I want each and every one of our students to develop confidence, determination, resilience and self belief. We encourage our students to embrace all that an education here at Wolverhampton Girls' High School has to offer by seizing the myriad of opportunities both within and outside of the curriculum, to develop passion for learning, and enjoy enriching activities. As a result, our students leave Wolverhampton Girls' High School with fond memories, and equipped as confident and independent minded young women ready to take on the challenges ahead and enjoy success in their chosen fields.

WGHS truly is a special place to be, with its supportive atmosphere, encouraging all students to achieve their best in all aspects of school life. If you would like to find out more about our school, please don't hesitate to get in touch.

Trudi Young
Headteacher



Welcome To Our Sixth Form

The Sixth Form students are at the heart of our school and every year we are delighted to welcome back returning students but also those who join us from other schools who help to enrich our whole school community.

Why choose us?

We offer a broad and varied curriculum

The school offers a broad and rich curriculum with over 20 subjects available for study at Wolverhampton Girls' High School which means that we are able to provide an educational pathway that is tailored to the individual student's needs.

We care

Care, support and guidance are key elements at Wolverhampton Girls' High School. Whilst academic achievements are exceptional this is not a solely academic school. Year 11 students join our Sixth Form knowing that they can fulfil their academic potential as well as developing the key skills essential for success both in and beyond school. We are highly skilled at ensuring students are able to secure places at outstanding institutions as well identifying and supporting applications for other opportunities beyond Sixth Form.

We achieve outstanding results

Each year the vast majority of our Year 13 students go on to further study including institutions such as Oxbridge and Russell Group Universities. We offer every encouragement to all students in whatever they wish to pursue, whether this be university, higher apprenticeships, employment or a gap year.

We offer exceptional opportunities

Sixth Form students have the chance to develop communication, leadership and independence skills through the diverse enrichment opportunities on offer. Sixth Form students play an instrumental role in the school community, organising a wide range of extra-curricular and enrichment activities, charity events and contributing to school development and are able to take on positions of responsibility such as House Captains, Prefects, Deputy and Assistant Head Girl and Head Girl. They also benefit from a wide range of trips abroad including USA, Italy, France, Spain, and Iceland, opportunities which support curriculum studies and help the girls to grow into well-rounded individuals.

Here at Girls' High we have a long and well-deserved reputation for offering students an exceptional two years of study in the Sixth Form. Each individual student who joins the Sixth Form is provided with the opportunity to achieve their own personal aspirations, both academically as well as beyond the classroom.

“What I love most about the school is that the teachers will always be there for you both academically and personally, whenever you need them.”

STUDENT



Excellence An environment catered to needs

Outstanding facilities

Students enjoy excellent, purpose-built accommodation throughout the school.

Wolverhampton Girls' High School is fortunate to have a brand new dedicated Sixth Form Centre which is modern, spacious and architecturally stunning. The newly built Sixth Form Centre provides a spacious and sociable area for all of the Sixth Form to relax during recreation and lunchtime. It has a range of facilities including a purpose built social/study space with a kitchen area, comfortable seating area, a study space, and further seating outside on the patio overlooking the school grounds. This is supplemented by additional study space in the old library and studio in the main school. The Sixth Form Centre is also where the many Sixth Form lessons take place with three teaching classrooms, a fourth seminar room, a meeting room and offices.

There are a number of more recent developments within the school including the Hub (for easy access to House Leaders and other pastoral and administrative staff), interactive lecture theatre (to support innovative learning opportunities), some refurbished laboratories and library in the main school.

The Hub and library can be used before and after school and Sixth Formers have access to these areas at all times. We also have various specialist teaching areas for art and design, music, sport, a performing arts studio and two computer rooms. Every Sixth Form student is provided with a one-to-one device to support independent study and learning both in lessons and outside of school.

Whether students' interests lie in sport, music, art or the sciences, our facilities provide an environment that enriches the academic experience at Girls' High.

We recognise that our Sixth Form students are very self-motivated so are given more responsibility and freedom for their own learning than they've had before. Sixth Form students are allowed to leave the site for lunch and are also given the privilege of Home Study periods which enables them to manage their own time to suit their personal needs.



“A gentle, determined and successful school run by scholarly staff who really seem to enjoy teaching bright, lively, willing pupils. For the pupils, experiences for life.”

GOOD SCHOOLS GUIDE

Excellence

Inspirational teaching, memorable learning

At Wolverhampton Girls' High School, exceptional outcomes are achieved through the inspirational teaching and the focused learning environments.



Across the school, there is a buzz of learning, with superb teacher subject knowledge, making subjects come alive, to develop a real thirst for learning. Teaching staff go above and beyond in and outside of the classroom, to ensure that the learning experience is inspirational and informative. The focused, support and challenge that is evident through peer to peer conversations, takes learning to a new level.

“Provision is excellent and students in the Sixth Form reach very high standards and make outstanding progress.”

OFSTED



We focus upon helping each and every one of our students to realise their potential and achieve their personal best. The outcomes at A Level speak for themselves. Learning across our school runs far deeper than these. It is about facilitating chances to discover passion and interests that will shape each student's future. Whether a student wants to continue their studies at a tertiary level, go straight into the world of work or take a different route beyond Sixth Form life, it is about encouraging a questioning mind and developing skills and attributes that will be essential for all that lies ahead.

Our learning environment truly opens doors and changes lives, through the inspirational teaching and the focused, sharing and supportive atmosphere amongst all members of our community. This environment enables personal excellence to flourish for all of our girls. A powerful mix of enthusiasm, inspiration, enjoyment and determination, creates a sense of true empowerment for all of our students.

Excellence

Broad and rich curriculum

At Wolverhampton Girls' High School, we believe that students are entitled to the highest quality education, which enables all students to achieve their full potential, and so prepare them for the opportunities, responsibilities and experiences of future life.



“Lessons are a completely different experience: the ambiance is relaxed; relationships with teachers are superb; and it is so enjoyable to take the subjects you love, or to try out new ones.”

STUDENT



Given the academically able intake, the main emphasis of the school curriculum is to prepare students for higher education or next steps Post 18. We also ensure that appropriate opportunities are given for all students to realise their full potential.

The school curriculum will promote the intellectual, spiritual, moral, social, physical and cultural development of students. It will also encourage cross-curricular engagement and the broadening of subjects beyond the classroom and into the wider community.

Excellence

Broad and rich curriculum

We offer a wide range of Post-16 A-level qualifications, leading to outstanding outcomes. Year after year our students secure exceptional results, enabling them to access the most competitive courses at the most sought after universities.



All subjects are taught by experienced specialist staff.

An effective and supportive learning environment fosters an atmosphere of academic rigour and debate, with many subjects offering the opportunity to go beyond specifications with lectures, competitions and wider reading. Students reach very high standards as a result of the focused and determined approach that they adopt; within an environment of support and challenge from members of staff.

We offer a personalised approach to curriculum provision allowing students to select programmes of study that best meet their needs.



“There is lots of support for all new Year 12 students to make the transition easier.”

STUDENT

Community

Pastoral care and support

The pastoral system allows students to realise their full academic potential whilst developing their social and personal qualities. This is achieved through a well-established structure of academic teaching and individual support and guidance.

We aim to ensure that students leave as independent, confident and well-rounded young women.

Throughout their time in the Sixth Form, students are supported and mentored by their Form Tutor, forming a strong working relationship. The Tutors in turn are supported by the House Leaders as well as the Director and Assistant Head of Sixth Form. Appropriate guidance and support can therefore be offered from the start of Sixth Form life; students can focus on their work and the extra-curricular activities and Enrichment programme on offer, in a secure and supportive environment.

Students joining the Sixth Form from other schools are invited to participate in the induction process in July, which includes taster lessons and meeting key members of staff, to enable them to familiarise themselves with the school and seek and guidance and support to ease the transition.

The vast majority of Year 13 students go on to University. Students' individual aspirations are catered for with a well structured UCAS application programme which includes: talks from University Admission Tutors, a Higher Education Evening, Careers Event, University Master Classes, and mock interviews. Every student receives individual support for their application. In addition, there is tailored support for Oxbridge, Medicine, Dentistry, and Veterinary Science candidates.

An Independent Adviser is also available to advise students of all other career opportunities such as apprenticeships, and other world of work schemes.

As well as the support given by the pastoral staff, Wolverhampton Girls' High School is keen to make sure that students have access to additional personal support should they require it via a dedicated Learning Mentor, School Counsellor, Education Psychologist or the School Nurse during her weekly visit to the school.



Strong House system

Fierce loyalty and rivalry transcends the House system at Wolverhampton Girls' High School. This forms the foundations on which our strong community is built, providing endless opportunities for leadership, personal development and friendship bonds.



The vibrancy of the school environment is most evident at our regular house events. With girls competing in the annual Sports Day for their House on the track, in the field or in the traditional welly wanging; camaraderie and determination are in abundance.

The annual House Arts competition in which over half of our community participate, offers the chance for students to write, direct, choreograph, compose and direct. With elements of dance, music, drama and musical expertise; this is a real chance to shine.

With sports competitions and House Debating, alongside the House Winter Games, where students compete in Football, Netball, Badminton, Table Tennis, A Bake Off, Textiles Competitions, Public Speaking, Dance, Spelling Bees, Quizzes and Creative tasks; there really is something for everyone.

The Sixth Form students play a vital role in maintaining and developing our house system. The house system provides opportunities for all of our Sixth Form students, including the roles of House Captain and Deputy House Captain, to serve as role models to empower, mentor, guide and help the younger members of their house to enable them to succeed in all aspects of their educational experience.

“There is no judgement at this school. Everyone is equal, regardless of religion, background or academic ability.”

STUDENT



Opportunities

In abundance

As well as ensuring academic success, we are serious about having fun and enjoying time at school. This is achieved through providing a wealth of extra curricular activities for students for engage in.



There are an ever growing range of clubs for students to get involved in.

The students have also competed at local, regional and national level in competitions ranging from Geography to Chemistry quizzes to the national Mathematic challenges to the Oxford and Cambridge Union Debating and the Bank of England Target 2.0 competition.

“Girls’ High, through providing me with opportunities and support, has given me the confidence needed to achieve my personal goals and aims. Some of these aims I wouldn’t have even considered pursuing if I hadn’t have come to the school and been given the guidance to make them a reality.”

STUDENT

All of our girls are gifted in different ways, we aim to unlock those gifts and help girls to flourish. Helping our girls to develop in the areas that they love is a central part of education at Girls’ High. Whether your daughter is an avid sportswoman, a budding musician, at home on the stage, or all of the above then there are endless opportunities to grow these skills. Whether she loves to dance, paint, draw or debate, she will be supported to develop.

Opportunities

Enrichment

The Sixth Form at Wolverhampton Girls' High School offers a broad and stimulating environment in which to spend the final years at school and to prepare for life beyond.

We have seized the opportunity afforded by the new linear A Levels to develop a programme for Sixth Formers that encourages them to develop their interests, go beyond their courses, work independently and – importantly – to love learning. In particular, we have developed an additional strand of the curriculum to stand as an alternative to a fourth or fifth A Level: the WGHS Enrichment Programme. This is a post-16 personalised education programme where students get to choose enrichment courses and have some control about how many courses are taken. The WGHS Enrichment Programme consists of a series of core (compulsory) and optional courses chosen from a broad range of offerings developed by enthusiastic staff and shaped by student requests.



Broaden cultural awareness

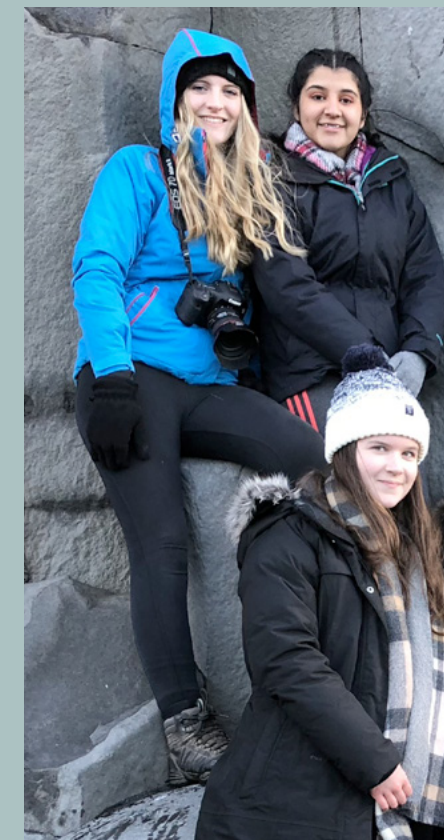


“There’s a lot going on at this school. ‘Enrichment’, that buzz word, is plentiful here.”

GOOD SCHOOLS GUIDE

We regard the WGHS Enrichment Programme as an opportunity to strengthen further the breadth of our Sixth Form offering and also ensure we maximise the opportunities for students to progress to their chosen higher education institutions or other preferred paths. A full explanation of the WGHS Enrichment Programme, and courses offered, can be found in the separate enrichment booklet.

We also expect our Sixth Form students to take on positions of responsibility in the school, such as contributing to one of the many student committees or clubs, or acting as role model and mentor to our younger students.



Opportunities to travel add depth and breadth to knowledge and understanding and develop and widen cultural awareness. Students have enjoyed trips to Iceland, China, Russia, Madagascar, USA, France, Italy and Spain in previous years.

“The strong sense of community spirit lies at the heart of our school ethos and has acted as an amazing support network for me throughout my time here.”

STUDENT

Opening doors to success

Come and join us



Skills, attributes, qualifications and fond memories set our students up for lifelong success.

Academic excellence is a key feature of life at Wolverhampton Girls' High School, with all working towards achieving their personal best. Education is much more than this though at Wolverhampton Girls' High School, with a real emphasis upon growing as an individual, growing in confidence and developing resilience. This ensures that our girls are ready to take on the challenges that lie ahead.

Students are welcome to join the Sixth Form from our current Year 11 and from other schools. Entry to Year 12 is on the basis of academic ability demonstrated by achievement in GCSEs. Places in the Sixth Form are awarded on the basis of the following criteria:

Students (external and internal) wishing to join the Sixth Form at Wolverhampton Girls' High School will usually be expected to achieve the criteria stipulated on the school website. Some subjects will require specific grades in order to study them; the subject information requirements can be found in this booklet. Subjects which are not GCSEs but deemed to be equivalent to GCSEs are not accepted. The Headteacher reserves the right to make the final decision on the application of this criteria.

All students will study 3 A levels with the opportunity to study 4 or 5 A levels dependant on the individual student's aspirations. In Year 13 there is also the opportunity to complete the Extended Project Qualification (for more information please see the subject information booklet).

Initially, conditional offers of admission to Year 12 will be made and these will be confirmed following the publication of GCSE results. Places are subject to maximum set sizes not being exceeded in individual subjects. A waiting list will be compiled of applicants who meet the academic requirements for admission to Year 12 but who, in accordance with the admission criteria, cannot be accommodated. Those on the waiting list will be ranked in order of merit based on their average total GCSE points score, but will only be admitted subject to vacancies being available in the subject areas requested.

Once admitted to the Sixth Form, each student will enter into an agreement with the school. That agreement will outline what students can expect from the school and what the school will expect from each student.

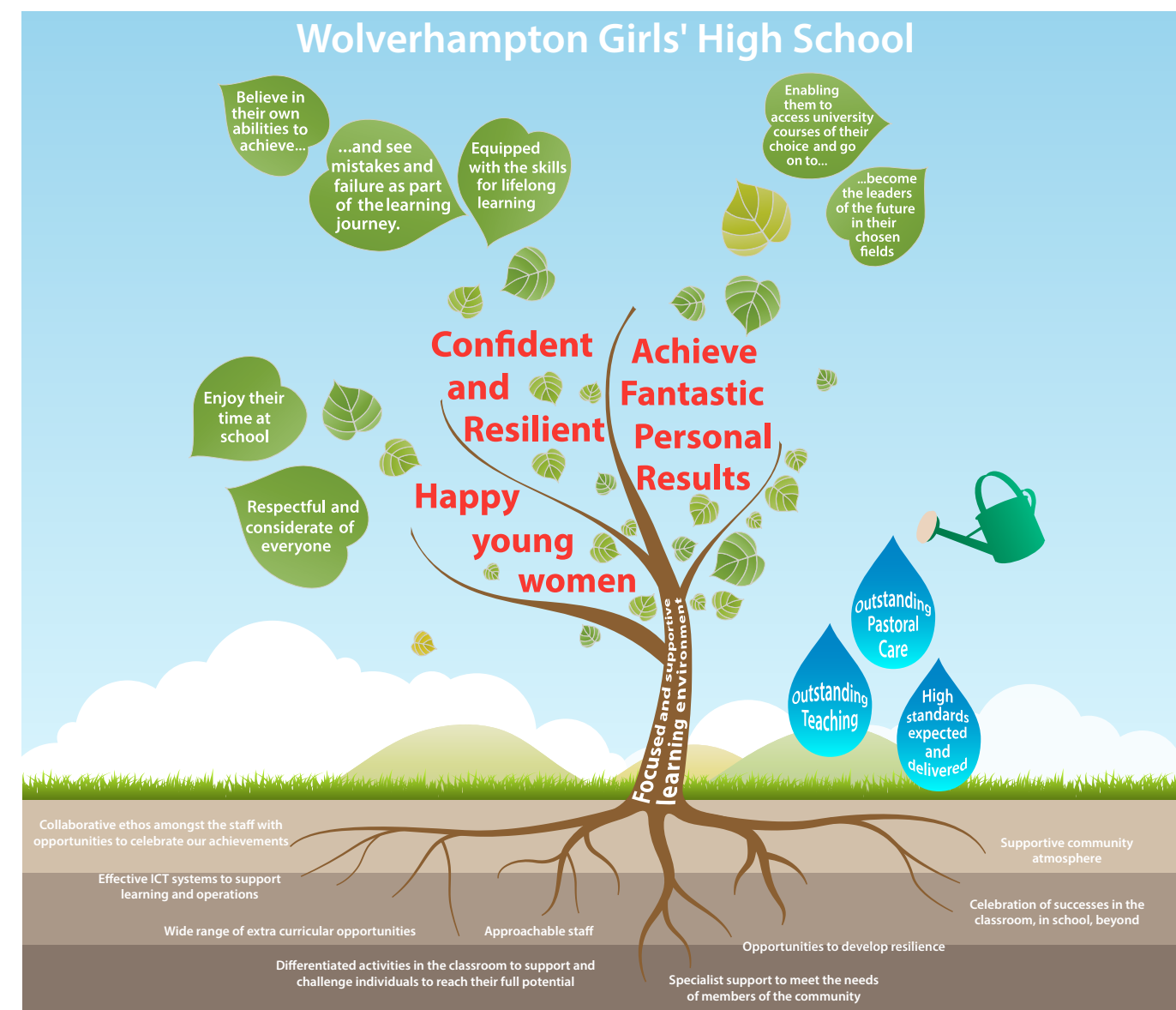
Any parent whose daughter is not offered a place will have the right to appeal.

We offer financial assistance to those students eligible for Pupil Premium, with the school able to subsidise: uniform; travel to school; and school trips.

- Registration is online and further information can be found on the school website.
- We would love to welcome you to our open events.

“Very impressed with the induction process. My daughter felt very welcomed into the school.”

PARENT





Academy Trust Company Number: 8918836

Tettenhall Road Wolverhampton WV6 0BY
Tel: 01902 551515 Fax: 01902 551516
Email: enquiries@wghs.org.uk

www.wghs.org.uk

