



Wolverhampton Girls' High School



Sixth Form

Prospectus

Developing happy, confident and resilient young women



WELCOME

FROM OUR SIXTH FORM TEAM

Welcome to Wolverhampton Girls' High School Sixth Form!

WGHS is an exciting and supportive place to take the next step in your academic journey. Our Sixth Form is all about helping you achieve your goals, both in the classroom and beyond. With inspiring teachers, a wide range of subjects and plenty of opportunities to get involved in leadership, enrichment and community activities, you'll find everything you need to grow in confidence and aim high. Whether you're continuing with us or joining from another school, we can't wait to welcome you into our warm, ambitious and forward-thinking Sixth Form community.

Mr Bagnall and Mrs Milovsorov
Associate Senior Leaders of Sixth Form





6 REASONS TO JOIN WGHS



Outstanding
Results

26

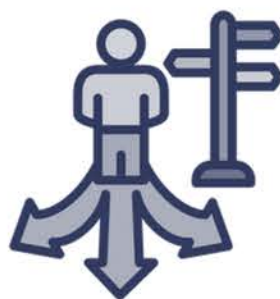
26 subjects offered
at A Level



Exceptional Enrichment
Programme



Fantastic
Pastoral Support



Excellent Advice for
UCAS and Careers



Warm and Friendly
Community

SUPPORT

Pastoral Team

Throughout your time at Girls' High you will be supported and mentored by your Form Tutor, forming a strong working relationship. The tutors in turn are supported by the Pastoral House Leaders and dedicated Sixth Form Team.

As well as the support given by the pastoral staff, WGHS is keen to make sure that students have access to additional personal support should they require it via the School Counsellor, Education Psychologist or our full time School Nurse.

UCAS and Careers Advice

Our Sixth Form Team are there to provide you with the support and guidance you need to thrive. We have a fantastic team who ensure our students are able to make the best decisions for their future. They can help with:

- UCAS and Apprenticeships support
- Impartial careers guidance
- Work experience placements
- Pathways and guest speakers

Finance and Bursary Fund

If you are experiencing financial hardship our Finance Team are there to support you. They can support you with things like:

- 16-19 Bursary Fund
- Travel
- Uniform
- Trips
- UCAS fees
- University Open Day costs
- Lunches
- Music Lessons

If you have any questions please email finance@wghs.org.uk





ENRICHMENT

At WGHS, as well as ensuring academic success we are serious about having fun! Wherever possible our classroom studies are supported by trips and residential to broaden cultural awareness and cement learning. We also have an exceptional social enrichment programme with a wealth of extra curricular activities for our students to engage in. All of our students are gifted in different ways and whether you are an avid sportswoman, painter, singer, dancer or love to debate - WGHS is the place for you!

Enrichment opportunities in Sixth Form at WGHS are designed to foster personal growth, academic excellence and leadership skills. Students are encouraged to take on a variety of leadership roles such as mentoring younger pupils, leading clubs and societies, or organising charitable events, which help develop confidence, responsibility and teamwork. These experiences complement our academic curriculum by promoting skills such as communication, problem-solving and initiative. Enrichment programs also include workshops, guest lectures, and community projects, providing a well-rounded education that prepares students not only for university but also for their future roles as inspiring leaders in their communities and beyond.

The WGHS Enrichment Programme

There is more to our Sixth Form than A Levels. We have created a post-16 personalised education programme, where you choose the courses you do and exercise some control over how many courses you take.

Core Enrichment includes:

- Supporting your studies
- Aspirations and Post-18
- Mind and Body

Optional Enrichment courses include: Classroom Medics, Photography, New Views Creative Writing, First Aid, British Sign Language, Volunteering and many more!

The Duke of Edinburgh Award

During Year 12 we are pleased to be able to offer students access to the Gold DofE award.

The Gold award is a challenging but rewarding programme. Students can access the Gold award even if they have not completed Silver or Bronze.

In July 2025, our students who had completed the Duke of Edinburgh Gold Award were invited to a Buckingham Palace Garden Party to receive their awards from The Duke of Edinburgh and had a truly memorable day.

DESTINATIONS

We are incredibly proud of all our students and their achievements. We support students in applying to university, apprenticeships and employment opportunities as they look towards their next steps.

In 2025, 90% of our students secured a university place - 82% secured their first choice university. Since 2021, 15 of our students have secured places at Oxford or Cambridge. In 2024 and 2025 48% of our students have gone on to attend Russell Group universities. Our students go on to study a large variety of courses with some of the most popular being Medicine, Computing, Engineering, Law, International Relations and Politics.

At WGHS we understand that applying to university can be a long and complex process and we are here to help you every step of the way. We have a dedicated team who can support with your UCAS application from start to finish and provide guidance where needed. We hold UCAS sessions where we offer insights into what to include in your personal statement, how to stand out from the crowd in your application and we invite former students in to school to talk to our students about their course and university life to give you a clearer picture of what to expect and the chance to make the best possible choice for you.

We will support you on whatever pathway you wish to take when you finish in Year 13.

Popular University Destinations

University	2025 Entry	2024 Entry	2023 Entry
Aston	9	14	13
Birmingham	18	23	18
Bristol	4	2	5
Cambridge	1	2	4
Cardiff	0	4	2
Durham	0	1	0
Exeter	2	4	4
Keele	6	10	6
Kings College London	1	1	2
Lancaster	2	2	3
Leeds	6	2	1

University	2025 Entry	2024 Entry	2023 Entry
Leicester	5	6	3
Liverpool	3	13	8
Loughborough	4	3	1
Manchester	0	5	2
Nottingham	5	5	6
Oxford	0	2	2
Reading	2	3	1
Sheffield	4	1	4
UCL	5	2	0
Warwick	4	3	4
Wolverhampton	2	1	4

Popular University Courses 2025

- 21 students studying Medicine
- 15 students studying Law
- 13 students studying Computing
- 9 students studying Engineering-related subjects
- 7 students studying Politics

SUBJECTS OFFERED

AT WGHS

Please see below the list of subjects which will be offered at Wolverhampton Girls' High School for 2026-2028. All courses offered are subject to suitable applicant numbers and may change.

Art	History
Biology	Latin
Business	Mathematics
Chemistry	Further Mathematics
Computer Science	Music
Classical Civilisation	Physical Education
Economics	Physics
English Literature	Psychology
Extended Project Qualification	Religious Studies
French	Russian
Geography	Sociology
German	Spanish
Government & Politics	Theatre Studies

In Year 12 students study 3 or 4 A Level subjects. A Levels will be assessed at the end of the second year of study and students will be assessed on the subject content at the end of Year 12 via internal mock examinations. The viability of a course running will depend on the number opting for it. In Year 13 there is also the opportunity to complete the Extended Project Qualification.

In addition, there is an extensive enrichment programme on offer.



ENTRY REQUIREMENTS

& ADVICE ON MAKING CHOICES

Admissions criteria for Sixth Form as follows:

Students (external and internal) wishing to join the Sixth Form at Wolverhampton Girls' High School are expected to achieve the academic standards outlined on the school website. Some subjects require specific grades in order to study them and the subject information requirements can be found in this booklet. Subjects which are not GCSEs but deemed to be equivalent to GCSEs are not accepted. The Headteacher reserves the right to make the final decision on the application of this criteria.

An enrichment programme is also in place to compliment your Sixth Form programme of study.

When making decisions on your subject choices you should consider:

- The subjects that you like and will enjoy studying and for which you have the motivation and interest to engage in additional research and background reading.
- The subjects you think you can do well in – it is the nature of your A Level grades which determines your university choice.
- Possible degree courses and careers you are interested in. Check the full entry requirement details for a handful of courses across different universities to ensure you are picking relevant subject choices.
- Not committing yourself to areas of study for which you have no enthusiasm because of a career plan which you may well wish to change later on. Keep your future options open by combining subject choices.
- Preparing yourself for the jump in level of difficulty in the transition from GCSE to A Level.
- Looking into Degree Apprenticeships for opportunities to work and study simultaneously in the field you're interested in.

WGHS students will receive advice on A Level choices:

- Through the Year 11 PSHCE programme.
- By attending Sixth Form open events.
- By timetabled individual interviews with senior staff.
- By experiencing being a 'Sixth Former for a day' and trialling possible A Level subjects.
- By talking to the staff who teach you.

Students new to the school

Suitable external applicants will be invited to a discussion with senior staff about your application which will involve possible career aspirations and guidance on choices before any final offer of a place is made.

A LEVEL RESULTS

2024-2025

SUBJECT	Total Entries	% of A*-A	% of A*-B
ART	8	62.50%	100%
BIOLOGY	76	52.63%	78.95%
BUSINESS	11	54.55%	90.91%
CHEMISTRY	71	46.48%	74.65%
CHINESE	1	100%	100%
CLASSICAL LITERATURE AND CIVILISATION	10	30%	90%
COMPUTER SCIENCE	18	38.90%	66.70%
ECONOMICS	6	83.33%	83.33%
ENGLISH LITERATURE	23	47.83%	78.26%
EPQ	18	50%	77.80%
FRENCH	11	72.73%	90.91%
FURTHER MATHS	10	70%	90%
GEOGRAPHY	11	45.45%	72.73%
GOVERNMENT AND POLITICS	18	50%	72.22%
HISTORY	24	25%	62.50%
LATIN	5	0%	80%
MATHS	66	46%	73.85%
MUSIC	3	33.33%	33.33%
PHYSICAL EDUCATION	3	33%	66.67%
PHYSICS	12	50%	66.67%
PSYCHOLOGY	48	56.25%	85.42%
RELIGIOUS STUDIES	7	42.86%	71.43%
RUSSIAN	4	75%	100%
SOCIOLOGY	22	63.64%	86.36%
THEATRE STUDIES	3	66.67%	100%
TOTAL	488	49.50%	78.20%

In line with Department for Education practice with published data where there are six or fewer candidates, the information has been suppressed as some students could be recognisable, dependent on their grade and what other information is available in the local community or public domain. On average these subjects achieved 95% A*/A and 100% A*/B.

BEYOND WGHS

ALUMNI STORIES



Kate Allan

Class of 2014

Current Role: Founder of ExpHand Prosthetics

Degree: Product Design Engineering MEng (with Placement) at Loughborough University

A-levels: Maths, Further Maths, Physics, General Studies

Experience of WGHS: I really enjoyed my time at WGHS, it was a great place for me to learn and develop academic and leadership skills that have contributed to the work I do today.



Harriet Agbonmare

Class of 2024

A Levels: Biology, Chemistry, Mathematics

Next steps: Currently studying Medicine at the University of Oxford

Experience of WGHS: My years at Girls' High played an immense role in shaping the person I am today. The big moments were always so special: winning races on Sports Day, organising charity events and giving speeches as Head Girl. The small moments even more so: spending time on the fields with friends, working hard in lessons and supporting younger students during form time. Whenever I look back, I am very grateful for the connections I made there, and the space I was given to make an impact in my own way. I'll always be a Girls' High girl at heart!



ART

Exam Board: AQA
Curriculum Lead: Mrs S Arrowsmith

COURSE OVERVIEW

Art at A Level aims to deepen visual literacy and develop an articulate communication of ideas. Students are introduced to a variety of experiences exploring a range of media (painting, drawing, mixed media, sculpture, installation, printmaking and lens or light-based media). Opportunities exist to work initially within “Art, Craft and Design” and to specialise in Fine Art later if the student and teacher deems this appropriate. Many students choose to develop their painting or mixed media work and work within Fine Art in Year 13.

Staff-led starting points encourage a focus on observational drawing, experimentation with media and a developed understanding and appreciation of artists’ work from a range of contexts. Through a series of workshops and then sustained portfolio work, individuals generate refined and resolved personal work in their particular area of interest.

At A Level more emphasis is on independent enquiry following tutorials with staff. The portfolio element in Year 13 is a “Personal Investigation” and includes a 3000 word essay, which is researched and developed to link closely to practical work. Students are encouraged to pursue their own line of enquiry or thematic idea or pose themselves a question to research and explore through visiting artists’ work and conducting their own practical investigations that lead to personal conclusions.



ENTRY REQUIREMENTS

Grade 6 or above in the subject at GCSE

FUTURE PROSPECTS

Studying Art can often be seen as a favourable addition to many other subject combinations and can represent a well-balanced education. It complements many subjects, including English Literature, Classical Civilisation, History and Government and Politics. Employers and admissions tutors can view those who have studied Art to A Level as having developed excellent visual literacy, independent enquiry, creative thinking and problem solving skills. These are highly prized abilities in a competitive market and an A Level in Art is far from dismissed in considering point scores and entry grade requirements for most university courses.

Art related courses include; Fine Art, Architecture, Art History, Printmaking, Sculpture, Graphic Design, Illustration, Fashion Design, Textiles, Museum and Gallery Studies, Photography, Animation, Advertising, Ceramics, Silversmithing & Jewellery Design, Glass Design.

ASSESSMENT

	Component 1 Personal Investigation	Component 2 Externally set assignment
Assessment	One whole sustained portfolio plus additional smaller portfolio of work. Includes 3000 word essay	
Length	May of Year 12- February Year 13	Starting points issued from 1st February. Preparatory period + 15hours supervised time.
Weighting	60%	40%

BIOLOGY

Exam Board: AQA
Curriculum Lead: Mr C Jones

COURSE OVERVIEW

The A Level course is designed to provide a suitable preparation for degree courses while the AS course would be appropriate for any student with an interest in Biological Sciences, but who does not intend to pursue a science related career. As well as developing biological knowledge and understanding, the course emphasises the way biologists work and the contributions they make to modern society. The course builds on concepts and skills that will have been developed in the new GCSE science specifications. It presents biology as exciting, relevant and challenging.

ENTRY REQUIREMENTS

Grade 7 or above in the subject at GCSE

CORE CONTENT

Paper 1

Biological molecules.

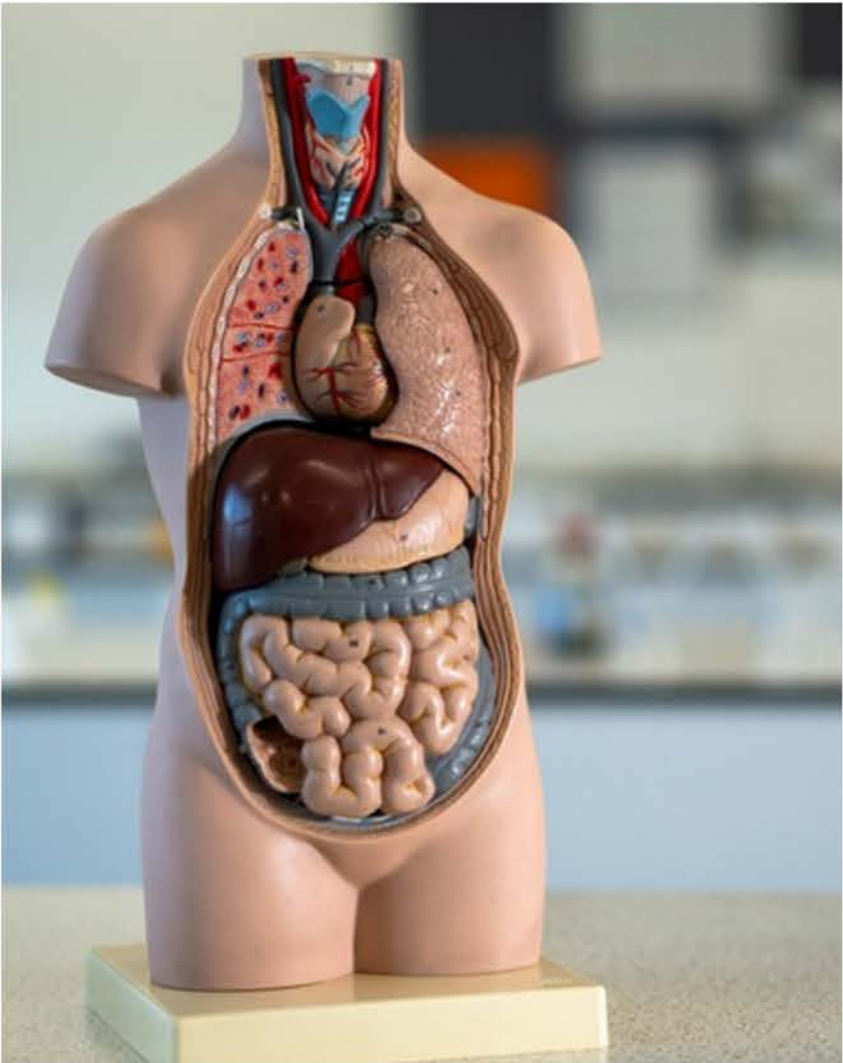
Cells. Organisms exchange substances with their environment. Genetic information, variation and relationships between organisms.

Paper 2

Energy transfers in and between organisms. Organisms respond to changes in their internal and external environments. Genetics, populations, evolution and ecosystems. The control of gene expression.

Paper 3

Any topics covered in paper 1 and 2 including relevant practical skills.



FUTURE PROSPECTS

Biological Sciences, Microbiology, Genetics, Molecular Biology, Ecology, Environmental Sciences, Medicine, Veterinary Sciences and Sport Sciences.

ASSESSMENT

	Paper 1	Paper 2	Paper 3
Assessment	Written Paper	Written Paper	Written Paper
Length	2 hours	2 hours	2 hours
Weighting	35%	35%	30%

BUSINESS

Exam Board: Edexcel
Curriculum Lead: Mrs R Auger

COURSE OVERVIEW

Aimed at anyone who wishes to develop an understanding of business operations, this course will help you to appreciate how and why business decisions are made and how they affect a variety of people – both within a business and externally.

A Level Business helps students develop a critical understanding of organisations, the markets they serve and the process of adding value. It enables students to develop an awareness of the current structure of business and business practice. It also provides students with the ability to foster a range of skills including decision-making and problem-solving.

ENTRY REQUIREMENTS

Meets school entry requirements

FUTURE PROSPECTS

This A Level subject is accepted as an entrance qualification for a wide variety of courses in higher education. A business degree is often used as an umbrella term covering a wide range of courses. Common course options include: accounting, business administration, business analysis, business computing, business ethics, business statistics, commercial law, developing markets, economic principles, finance, human resources, international studies, research and technology.

Skills in management and marketing are also required in other areas such as charity, social work and local government, while a knowledge of business is also important for consultancy, certain teaching jobs and for financial journalists.

ASSESSMENT

	Paper 1	Paper 2	Paper 3
Assessment	Written Paper	Written Paper	Written Paper
Length	2 hours	2 hours	2 hours
Weighting	35%	35%	30%



CORE CONTENT

Paper 1

Marketing, people and global businesses

Paper 2

Business activities, decisions and strategy

Paper 3

Investigating business in a competitive environment

CHEMISTRY

Exam Board: AQA
Curriculum Lead: Mrs M Husein

COURSE OVERVIEW

Chemistry may be studied as a single science or in combination with any of the other sciences. It builds on the concepts and ideas studied at GCSE with a particular emphasis on practical work throughout the course which is designed to develop investigative skills.

ENTRY REQUIREMENTS

Grade 7 or above in the subject at GCSE

CORE CONTENT

3.1: Physical Chemistry

This unit extends the principles learnt at GCSE and included the further study of acids and bases.

3.2: Inorganic Chemistry

This unit studies more patterns and trends in inorganic Chemistry, including the physical and chemical properties of elements across the periodic table.

3.3: Organic Chemistry and Analysis

The Chemistry of compounds based on carbon and associated instrumental and chemical analysis.



FUTURE PROSPECTS

The importance of Chemistry as a science is reflected in its priority requirement in many fields of science such as medicine, dentistry, veterinary science, pharmacy, geological and environmental sciences, biochemistry and chemical engineering. Many of our former students have gone to university to study in these areas of Chemistry. Since Chemistry involves logical thought and critical analysis, many non-science related courses at university accept those who have studied Chemistry.

ASSESSMENT

	Paper 1	Paper 2	Paper 3
Assessment	Written Paper	Written Paper	Written Paper
Length	2 hours	2 hours	2 hours
Weighting	35%	35%	30%

COMPUTER SCIENCE

Exam Board: AQA
Curriculum Lead: Mr T Lewis

COURSE OVERVIEW

It is an exciting time to be a computer scientist! We are living in the midst of a revolution powered by computers. This course will extend what students have experienced at GCSE so that they gain an in-depth knowledge of how computers work and how to develop software solutions to difficult problems.

Computer Science at A Level spans theory and practice. The practical side of the course will give you intensive hands-on experience of coding, but Computer Science is also about problem solving. This requires skills of precision, creativity and careful reasoning.

ENTRY REQUIREMENTS

Grade 6 or above in the subject at GCSE

CORE CONTENT

Paper 1: Computational Thinking & Programming

This paper tests a student's ability to program, as well as their theoretical knowledge of computer science fundamentals including programming, data representation & algorithms.

Paper 2: Computer Science

This paper tests a student's understanding of technology developments, advanced techniques, a variety of programming languages and big data.

Paper 3: Programming Project

The non-exam assessment assesses student's ability to use the knowledge and skills gained through the course to solve or investigate a practical problem. Students will be expected to follow a systematic approach to problem solving.

ASSESSMENT

	Paper 1	Paper 2	Paper 3
Assessment	On-screen Exam	Written Exam	Programming Project
Length	2 hours 30	2 hours 30	
Weighting	40%	40%	20%



FUTURE PROSPECTS

A Level Computer Science is valued by universities and employers alike as proof of a logical mind and is seen as the perfect complement to other maths, science or engineering subjects.

Avenues for future employment include: video game development, artificial intelligence, software engineering, animation, computer architecture, teaching, biomechanics, electrical and mechanical engineering, networking, graphics and many more.

CLASSICAL CIVILISATION

Exam Board: OCR
Curriculum Lead: Mr J Carlyle

COURSE OVERVIEW

Many of us have fond memories of Greek myths and legends. Classical Civilisation builds on these great stories with their striking morals and debates fundamental questions such as what should we strive for in life: the virtuous or the pleasurable? Should the head always rule the heart? Is it the most noble thing you can do to die for your country? What responsibilities does a ruler have towards his or her subjects? How and why do civilisations develop as they do? One of the most interesting questions of course is to what extent humanity has changed, and whether we have actually learnt anything from our past. We aim to answer these and more through studying texts and archaeological finds which have, incredibly, survived well over 2000 years.

ENTRY REQUIREMENTS

Meets school entry requirements

CORE CONTENT

Paper 1: The World of the Hero

Set Sources: Homer's *Odyssey* and Virgil's *Aeneid*

Paper 2: Greek Theatre

Set Sources: Sophocles' *Oedipus the King*, Euripides' *Bacchae*, Aristophanes' *Frogs*

Paper 3: Greek Religion

Set Sources: The sites of the Acropolis, Delphi and Olympia; a mix of short written sources.

ASSESSMENT

	Paper 1	Paper 2	Paper 3
Assessment	Written Paper	Written Paper	Written Paper
Length	2 hours 20	1 hour 45	1 hour 45
Weighting	40%	30%	30%



FUTURE PROSPECTS

Classical Studies and Archaeology courses continue to grow at university and the A Level especially complements related courses such as English, Theatre Studies, History and Art. However, many students also take it as balance for the sciences.

Previous students have been taken on as management trainees, gone into the media, banking, accountancy, law or teaching. All Classical subjects are known to keep your options open because of the wide range of skills learned. Students develop their understanding of cultures that underpin our lives and learn to think for themselves, drawing conclusions from primary evidence

ECONOMICS

Exam Board: Edexcel
Curriculum Lead: Mrs R Auger

COURSE OVERVIEW

Economics is the science that deals with the production, distribution, and consumption of goods and services, or the material welfare of humankind. To this end it aims to solve practical problems within the world. The roles of governments and the Bank of England (specifically) in managing the economy are also investigated. An interest in current economic affairs is essential.

ENTRY REQUIREMENTS

Meets school entry requirements

CORE CONTENT

Theme 1: Introduction to markets and market failure
How do consumers react when the price of goods changes? Why are some goods e.g. alcohol and tobacco over-consumed? What can be done about this?

Theme 2: The UK Economy - performance and policies
Investigates areas such as how can the Government promote economic growth? When should the Bank of England raise interest rates?

Theme 3: Business behaviour and the labour market
Examines how firms compete and such questions as are Monopolies good or bad or should the minimum wage be raised and why are wage rates for different workers so varied?

Theme 4: A Global Perspective
Considers topics such as development economics and does globalisation benefit Britain?



FUTURE PROSPECTS

Economics is an excellent choice for degrees in Economics, Business Studies, Management and Finance, Politics, Geography, Law and History. It is highly recommended for careers in government, mass media, industrial firms, banks and financial firms in the City, international organisations and trade unions.

Economics develops valuable analytical skills in assessing arguments, views and statistical data. Economics requires and develops logical thinking skills.

ASSESSMENT

	Paper 1	Paper 2	Paper 3
Assessment	Written Paper	Written Paper	Written Paper
Length	2 hours	2 hours	2 hours
Weighting	35%	35%	30%

ENGLISH LITERATURE

Exam Board: OCR
Curriculum Lead: Mrs E Booton-Ford

COURSE OVERVIEW

This is a course which will stimulate, challenge and inspire anyone who enjoys reading novels, poetry and plays and who likes to form independent views and judgements on what they read. You will study a range of literary genres, considering the relationships between a text and its social, historical and cultural context. You will explore literary periods and delve deeply into the critical views of the time.

ENTRY REQUIREMENTS

Grade 6 or above in both English Literature and English Language at GCSE

KEY POINTS

English Literature offers you the opportunity to develop your ability to communicate fluently, accurately and effectively and to express cogent argument both verbally and in writing. You will be encouraged to respond critically and creatively to a range of literary texts, engaging with and challenging other readers' interpretations. In addition, you will be expected to read widely in order to enhance your knowledge and understanding of different genres and periods.

Lively debate is crucial to the study of any literary text and you will be called upon to voice your own views and judgements, whether in small group or whole-class discussion. You will also be asked from time to time to give paired or individual presentations on a particular aspect of a text. Such activities provide the opportunity to orally rehearse arguments and support you in producing more formal written responses.

The literary texts studied at both AS and A Level represent some of the finest works ever written across all three genres: poetry, prose and drama. As a department, we actively seek opportunities to see live theatre and encourage a diverse experience with this course.

English Literature texts vary depending on the teachers assigned to each cohort. All students will study the Gothic (Frankenstein and The Bloody Chamber), but the Drama and Poetry unit texts covered will either be: The Merchant's Tale and The Duchess of Malfi OR A Doll's House and Rossetti poetry.

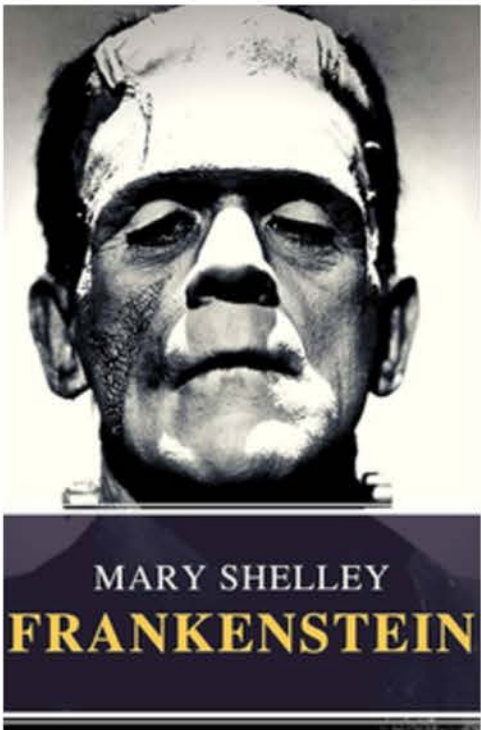
The NEA also offers some flexibility and choice for students to select a novel of their choice to compare to a play. In the past, novels such as Wide Sargasso Sea and Normal People have been taught by teachers for students to then compare to A Streetcar Named Desire.

FUTURE PROSPECTS

This subject is firstly highly regarded by universities for its academic rigour and is definitely a facilitating subject. It also opens the door to a wide range of careers; journalism, publishing, marketing, public relations, management, the media, the law.

ASSESSMENT

	Paper 1 - 'The Merchant's Tale' and 'Duchess of Malfi'	Paper 2 - 'Frankenstein' and 'The Bloody Chamber'	Paper 3 Literature Post-1900
Assessment	Written Paper	Written Paper	Coursework
Length	2 hours 30	2 hours 30	
Weighting	40%	40%	20%



EXTENDED PROJECT QUALIFICATION

Exam Board: AQA
Curriculum Lead: Mrs AM Morton

COURSE OVERVIEW

The EPQ is a rewarding and independent project. Due to the demands of the qualification we would not recommend undertaking it unless you are on track with making expected progress with the main A Level subjects at the end of Year 12.

ENTRY REQUIREMENTS

Meets school entry requirements

KEY POINTS

There are no academic lessons for the EPQ. You will be taught some key skills at the beginning of your project and you will meet regularly with your supervisor throughout the process, but it will be your responsibility to:

- Plan and complete an individual project applying organisational skills and strategies to meet stated objectives.
- Obtain and select information from a range of sources.
- Select and use a range of skills, including new technologies where appropriate.
- Evaluate outcomes including own learning and performance and select and use a range of communication skills and media to convey and present evidenced outcomes and conclusions.

FUTURE PROSPECTS

Universities may consider EPQ when deciding whether to make an offer. It is held to be excellent preparation for the more independent learning style needed in Higher Education. For university interviews, EPQ can provide excellent discussion material.

ASSESSMENT

There is no exam. You will be assessed by the centre on the following:

- A completed Production Log including the Project Proposal Form
- A written report of 5000 words OR
- An artefact and accompanying written report

Grades available: A* - E



FRENCH

Exam Board: AQA
Curriculum Lead: Mrs C Dhamia

COURSE OVERVIEW

Can you communicate? Do you want to find out more about the French-speaking world? The course builds on the skills acquired at GCSE, provides insight into another culture and society, provides a sound basis for further study and enhances employment prospects.

ENTRY REQUIREMENTS

Grade 6 or above in the subject at GCSE

CORE CONTENT

Aspects of French-speaking society: current trends

- The changing nature of the family
- The 'cyber-society'
- The place of voluntary work.

Artistic culture in the French-speaking world

- A culture proud of its heritage
- Contemporary francophone music
- Cinema: the 7th art form.

Aspects of French-speaking society: current issues

- Positive features of a diverse Society
- Life for the marginalised
- How criminals are treated.

Aspects of political life in the French-speaking world

- Teenagers, the right to vote and political commitment.
- Demonstrations, strikes – who holds the power?
- Politics and immigration.

FUTURE PROSPECTS

A degree in French, or a degree in French combined with another subject, can help prepare you for a career in many fields: Tourism, Education, Translating, Interpreting, Journalism, Civil Service, Administration, Marketing, Linguistics - the possibilities are endless.

ASSESSMENT

	Paper 1	Paper 2	Paper 3
Assessment	Written Exam	Written Exam	Speaking Assessment
Length	2 hours 30	2 hours	21-23 minutes (including 5 minutes preparation)
Weighting	50%	20%	30%



KEY POINTS

You will:

- Need to play an active part in lessons.
- Be encouraged to express your ideas and opinions orally and on paper.
- Learn about French life and culture
- Be willing to tackle French grammar.

GEOGRAPHY

Exam Board: OCR
Curriculum Lead: Miss L Tunstall

COURSE OVERVIEW

Geography is such an important part of our understanding of the world. At a time of growing concern about climate change, shrinking global resources and desire for sustainable solutions, Geography is one of the most relevant and dynamic courses that you could choose to study. It is a multidisciplinary subject – a really interesting mix across science and arts.

ENTRY REQUIREMENTS

Grade 6 or above in the subject at GCSE

CORE CONTENT

Unit 1: Physical Systems

- Landscape Systems (Coasts)
- Earth's Life Support Systems (Water and Carbon Cycles).

Unit 2: Human Interaction

- Changing Spaces; Making Places
- Global Connections (Global Migration, Human Rights).

Unit 3: Geographical Debates

- Disease Dilemmas
- Hazardous Earth.

Unit 4: Investigative Geography

- Independent Investigation.

ASSESSMENT

	Unit 1	Unit 2	Unit 3	Unit 4
Assessment	Written Exam	Written Exam	Written Exam	Coursework
Length	1 hour 45	1 hour 45	2 hours 30	3000 words
Weighting	22%	22%	36%	20%



FUTURE PROSPECTS

Post 16 study of Geography enables you to develop an in-depth understanding of physical and human processes at a range of scales, and to consider the key issues facing the world today, including global migration and variations in female rights, as well as opportunity to gain vital geographical, fieldwork and life skills.

GERMAN

Exam Board: AQA
Curriculum Lead: Mrs C Dhamia

COURSE OVERVIEW

Can you communicate? Do you want to find out more about the German-speaking world? The course builds on the skills acquired at GCSE, provides insight into another culture and society, provides a sound basis for further study and enhances employment prospects.

You will:

- Need to play an active part in lessons.
- Be encouraged to express your ideas and opinions orally and on paper.
- Learn about German life and culture
- Be willing to tackle German grammar.

ENTRY REQUIREMENTS

Grade 6 or above in the subject at GCSE

CORE CONTENT

Aspects of German-speaking society

- The changing state of the family
- The digital world
- Youth, Culture: fashion and trends, music, television.

Artistic culture in the German-speaking world

- Festivals and traditions
- Art and architecture
- Cultural life in Berlin, past and present.

Multiculturalism in German-speaking society

- Immigration
- Integration
- Racism.

Aspects of political life in the German-speaking world

- Germany and the European Union
- Politics and youth
- German reunification and its consequences.



FUTURE PROSPECTS

A degree in German, or a degree in German combined with another subject, can help prepare you for a career in many fields: Tourism, Education, Translating, Interpreting, Journalism, Civil Service, Administration, Marketing, Linguistics... the possibilities are endless.

ASSESSMENT

	Paper 1	Paper 2	Paper 3
Assessment	Written Exam	Written Exam	Speaking Assessment
Length	2 hours 30	2 hours	21-23 minutes (including 5 minutes preparation)
Weighting	50%	20%	30%

GOVERNMENT & POLITICS

Exam Board: AQA
Curriculum Lead: Mr A Bagnall

COURSE OVERVIEW

Lively, relevant, controversial... there are many ways to describe A-Level Politics. There's no denying that it's one of the most interesting and engaging qualifications you can choose. Covering news, current affairs, where power lies and how democracy works in the UK and US, it helps you understand how the UK is run and develops the students' research, written communication and debate skills. The focus in A Level is upon the way democracy works in Britain and the United States of America through examining political ideas and structures of government. An opinion and an open mind to others' views are needed.

ENTRY REQUIREMENTS

Meets school entry requirements

CORE CONTENT

Year 12 Focus - Britain

Referendums, The Role of the Media in Politics, Voting Behaviour, Political Parties, Parliament, Devolution, The UK Constitution, Prime Ministerial Power, The UK Judiciary and Political Ideas.

Year 13 Focus - USA

Elections, Pressure Groups, The American Constitution, Presidential Power, The Supreme Court, US Civil Rights and Political Ideologies.

Politics offers a chance to engage with past events and deepens your understanding of the dramatic events in the news today, both in the UK and the USA.



FUTURE PROSPECTS

The skills and critical thinking you will develop in studying Politics will help you go on to a range of further study and career choices. It's ideal if you're considering studying politics, sociology, philosophy, ethics, economics, law, history, advertising, international relations or journalism at university. It is also highly regarded by employers in industries including politics, international organisations, the media, government and the civil service.

ASSESSMENT

	Paper 1	Paper 2	Paper 3
Assessment	Written Exam Government & Politics of the UK	Written Exam Government & Politics of the USA - Comparative politics	Written Exam Political Ideas
Length	2 hours	2 hours	2 hours
Weighting	33%	33%	33%

HISTORY

Exam Board: AQA
Curriculum Lead: Mr A Bagnall

COURSE OVERVIEW

The course includes:

- A breadth study of approximately 100 years. Tsarist and Communist Russia 1855-1964.
- A depth study of approximately 50 years. The Making of Modern Britain 1951-2007.
- A personal study (NEA) over 100 years. The Witch craze in Early Modern Europe.

ENTRY REQUIREMENTS

Grade 6 or above in the subject at GCSE

CORE CONTENT

Tsarist and Communist Russia 1855-1964.

This is a fascinating period in world history, including one of the most important events of the twentieth century – the Russian Revolution- which led to the creation of the first communist state.

Modern British History 1951-2007

Within this unit we explore Society, Foreign Relations and Political Parties and the role of PMs in shaping our lives

The Witch craze in early modern Europe

Students also undertake a personal study which enables them to demonstrate their historical research skills. This independent study is excellent preparation for Higher Education and will focus on the 16th and 17th Centuries.



FUTURE PROSPECTS

History is a very highly regarded academic discipline that facilitates access to a wide range of higher education courses and careers. Students of History are equipped with a wide range of transferable skills. They are adept at dealing with large quantities of information, have the ability to apply an analytical mind set to all kinds of situations and challenges, learn to construct convincing sustained arguments and can gather, investigate and assess a range of sources. Employers value the research, analytical, teamwork and communication skills that History students develop and these skills are relevant in just about any industry which has a focus on current societies and future developments, particularly in, but not exclusively, the fields of business, law, politics, journalism and academia.

ASSESSMENT

	Paper 1	Paper 2	Paper 3
Assessment	Written Exam Tsarist and Communist Russia 1855-1964	Written Exam The Making of Modern Britain 1951 – 2007	Personal Study
Length	2 hours 30	2 hours 30	4-4500 words
Weighting	40%	40%	20%

LATIN

Exam Board: OCR
Curriculum Lead: Mr J Carlyle

COURSE OVERVIEW

Latin combines many disciplines into one subject, with elements of language, literature, history, cultural awareness and moral debate. It complements all other subjects extremely well, including the sciences.

At its annual conference, UCAS is always clear that students should follow their passions. Students who enjoy and do well in GCSE should strongly consider continuing at A Level. Despite its reputation for academic rigour, many students comment that Latin is their 'fun subject' and they enjoy finding out about Rome's rich history, as well as Greek myth, through original Latin stories. Language and vocabulary build on the GCSE foundations.

ENTRY REQUIREMENTS

Grade 6 or above in the subject at GCSE

KEY POINTS

A Level Latin tends to attract dedicated, passionate students. The key skills which appeal to universities and employers are central to the course. As a university Admissions Tutor said: "Students taking Latin are typically scholarly. They pursue academic study in the purest sense, they are not simply fulfilling a requirement."

We aim to visit Italy during the course to bring the places we study to life, the highlight of the trip for most being Pompeii and Vesuvius.



FUTURE PROSPECTS

Latin is very highly regarded by universities and employers and an A Level in the subject will immediately attract the attention of interviewers. They know that a Latin student will have strong academic and interpersonal skills, as well as precision and analytical skills, historical understanding and cultural awareness. The Russell Group of universities give Latin as a 'facilitating' subject, so that it keeps the door open to a wide range of careers in management, Civil Service, teaching, archaeology, medicine, law and many others.

ASSESSMENT

	Paper 1 & 2	Paper 3	Paper 4
Assessment	Written Paper Unseen Translation Unseen Comprehension	Written Paper Scandals of the Roman Emperor Tiberius and turmoil of the imperial court	Written Paper The challenges faced by the Trojan hero Aeneas on a mission to found the 'new' Troy.
Length	1 hour 45	2 hours	2 hours
Weighting	50%	25%	25%

MATHEMATICS

Exam Board: Edexcel
Curriculum Lead: Mr R Brocklehurst

COURSE OVERVIEW

Mathematics is historically a highly valued subject, studied by many famous scientists, philosophers and thinkers from many different cultures and throughout time; so to study it is to join a long list of intellectuals. It is an exciting and interesting subject in its own right.

ENTRY REQUIREMENTS

Grade 7 or above in the subject at GCSE

KEY POINTS

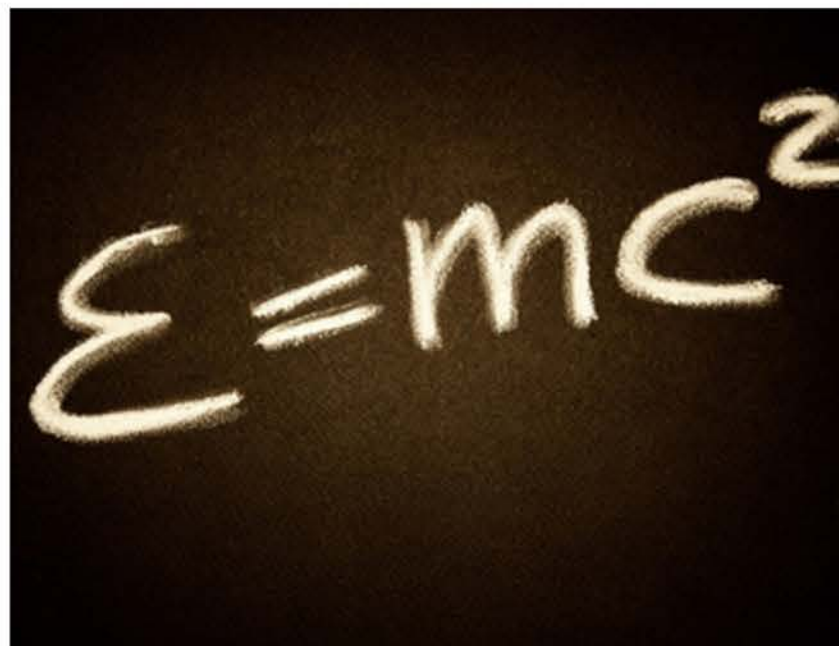
All modules are compulsory. Two thirds of the course will be Pure Maths with mechanics and statistics having equal weighting in the final third.

The Pure units build on your knowledge of graphs, trigonometry and algebra. You will also study calculus which is a very powerful mathematical tool.

In Statistics you will learn to interpret large data sets, consider statistical modelling and hypothesis testing and look at probability.

In Mechanics you are introduced to mathematical modelling of physical situations using dynamics, kinematics and statics and will be introduced to Newton's laws.

All papers will contain a mix of question styles from short, single-mark questions to multi-step problems.



FUTURE PROSPECTS

Mathematics is a highly valued tool for many disciplines such as science, economics, engineering, computing, and finance.

The list is endless as Mathematics has become an integral part of almost every job, especially with the growth in the use of statistics to analyse data over the last century.

Mathematics provides a general education in logical thought and problem solving, skills which are highly marketable.

In recent years our Mathematics students have gone on to do Pure Mathematics degrees at Cambridge, Warwick, Birmingham, Oxford and Liverpool. Mathematics students have also gone on to do a variety of other Mathematical related courses including: Mathematics and Physics, Mathematics with Ocean and Climate Studies, Aeronautical Engineering and Astrophysics.

ASSESSMENT

	Paper 1	Paper 2	Paper 3
Assessment	Exam Pure Mathematics	Exam Pure Mathematics	Exam Statistics & Mechanics
Length	2 hours	2 hours	2 hours
Weighting	33.30%	33.30%	33.30%

FURTHER MATHEMATICS

Exam Board: Edexcel
Curriculum Lead: Mr R Brocklehurst

COURSE OVERVIEW

Mathematics is historically a highly valued subject, studied by many famous scientists, philosophers and thinkers, from many different cultures and throughout time; so to study it is to join a long list of intellectuals. It is an exciting and interesting subject in its own right.

ENTRY REQUIREMENTS

Grade 7 or above in the subject at GCSE

FUTURE PROSPECTS

Anyone considering Mathematics, Engineering or some Economics courses at university is strongly recommended to choose this option. It encourages an offer and helps in the first year of undergraduate study.

KEY POINTS

In Further Mathematics students study Further Pure Mathematics and Further Mechanics along with a Further Statistics Unit.

ASSESSMENT

	Paper 1	Paper 2	Paper 3	Paper 4
Assessment	Exam - Core Pure Maths	Exam - Core Pure Maths	Exam - Further Mechanics	Exam - Further Statistics
Length	1 hour 30	1 hour 30	1 hour 30	1 hour 30
Weighting	25%	25%	25%	25%



MUSIC

Exam Board: Eduqas
Curriculum Lead: Miss M Carr

COURSE OVERVIEW

The word music covers a huge range of different styles and genres, and each one of us has our own preferences and interests. The EDUQAS A level specifications recognise this through the varied areas of study covered throughout the course. Areas of study include the Development of the Symphony, Musical Theatre, and Into the Twentieth Century. Students will have three set works to study from Area of Study 1 and Area of Study 3. There are no set works for Area of Study 2.

ENTRY REQUIREMENTS

Grade 6 or above in the subject at GCSE and Grade 6 on your chosen instrument

FUTURE PROSPECTS

A Level Music may be used as part of the entry for any degree with the single exception of Veterinary Science. It is a necessary requirement for anyone wishing to study Music or Music Technology at university and is a highly regarded “A-list” subject at all leading universities as it demonstrates qualities of perseverance and dedication, and it is a highly demanding academic study that enables the individual to develop numerous transferable skills. A degree in Music allows students to pursue a variety of careers both in the Arts and in any area where lateral thinking, focus, resilience, personal drive and teamwork are required. Many positions are available in the creative industries such as performance, composition, music research, journalism, music production and studio work and the world of theatre or media as well as teaching. The study of creative subjects, like Music, is becoming even more important and relevant to young people to give you the chance to succeed – whatever your ambitions.



KEY POINTS

You need to be an enthusiastic performer and dedicated to your musicianship. The music department holds weekly rehearsals for Choirs and Vocal Ensembles, String Orchestra, Concert Band for wind and brass and Jazz Band to name but a few. There is also the option of joining a chamber music group and performing as a soloist in a variety of situations. If you opt to study Music at A Level, you will be required to commit to a minimum of one ensemble and you will also be encouraged to find external groups with whom you would perform. Regular enhancement activities such as concert visits are arranged, and these are tailored to the studies of the group. The school is a centre for the main examination boards offering instrumental grading for one or more of ABRSM, Trinity Guildhall and London College each term. A Level students are given a half individual (fortnightly) lesson on their chosen instrument to prepare their repertoire. In Year 13, students focus on working with their accompanist during these lessons.

ASSESSMENT

	Component 1	Component 2	Component 3
Assessment	Performance (3 pieces)	Composition (2 pieces)	Written Exam Appraising
Length	10-12 minutes	1 hour 30	1 hour 30
Weighting	35%	25%	25%

PHYSICAL EDUCATION

Exam Board: OCR
Curriculum Lead: Miss C Canlett

COURSE OVERVIEW

Studying A level Physical Education will give you a fantastic insight into the amazing world of sports performance. Not only will you have the chance to perform or coach a sport through the non-exam assessment component (NEA), you will also develop a wide-ranging knowledge into the how and why of physical activity and sport. This engaging course enables learners to critically analyse and evaluate their physical performance, apply their experience of practical activity and develop their knowledge and understanding of interesting subject content.

ENTRY REQUIREMENTS

Grade 6 or above in the subject at GCSE

CORE CONTENT

The course is very diverse, covering a wide range of sports-related fields of study. It is composed of four components:

- Physiological factors affecting performance
- Psychological factors affecting performance
- Socio-cultural factors affecting performance
- Performance in Physical Education

For more information see the subjects specification document: <https://www.ocr.org.uk/Images/234833-specification-accredited-a-level-gce-physical-education-h555.pdf>

This specification creates confident, independent thinkers and effective decision makers who can operate effectively as individuals and as part of a team – all skills that will enable you to stand out and effectively promote yourselves as you progress through life.

FUTURE PROSPECTS

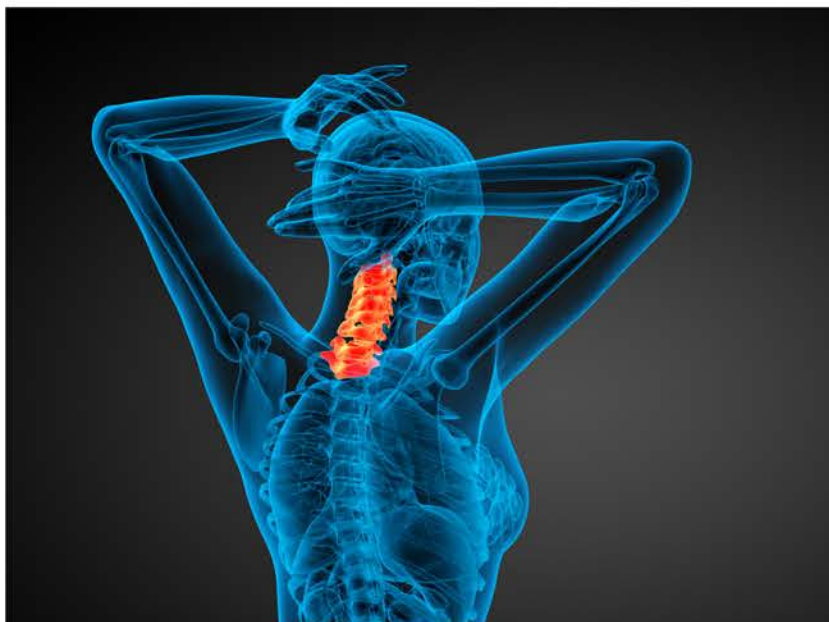
A level PE is an excellent base for a degree in sports science, biology, psychology, sociology, physiotherapy, physical education, sport and leisure management, healthcare, nutrition and dietetics, sports development, or exercise and health.

The course can be studied alongside any subjects but especially complements studies in Science. For those wishing to pursue Sports Science or Physiotherapy, combining PE with a Science subject is often essential.

A level Physical Education can open up a range of career opportunities in the sports industry, including sports physiology, psychology or biomechanics, sports development, sports coaching, physiotherapy, personal training, sports journalism, sports technology and PE teaching.

ASSESSMENT

	Paper 1	Paper 2	Paper 3	NEA	Evaluation and Analysis of Performance and Improvement
Assessment	Exam - Physiological factors affecting performance	Exam - Psychological factors affecting performance	Exam - Socio-cultural factors affecting performance	Practical Performance	Presentation
Length	2 hours	1 hour	1 hour		
Weighting	70%			15%	15%



PHYSICS

Exam Board: AQA
Curriculum Lead: Ms J Davies

COURSE OVERVIEW

Studying physics after your GCSEs really develops your practical and mathematical skills. If you enjoy experimenting in the lab and problem solving, you'll love it. Physicists explore the fundamental nature of almost everything we know of. They study everything from the fundamental particles that build matter, to the galaxies that make up the universe itself. Join them to enter a world deep beneath the surface of normal human experience. The course is designed to form strong scientific investigative skills while introducing you to the wonderful world of physics. The course covers the more traditional mechanics, waves and electricity modules as well as introducing you to particle and quantum phenomena.

CORE CONTENT

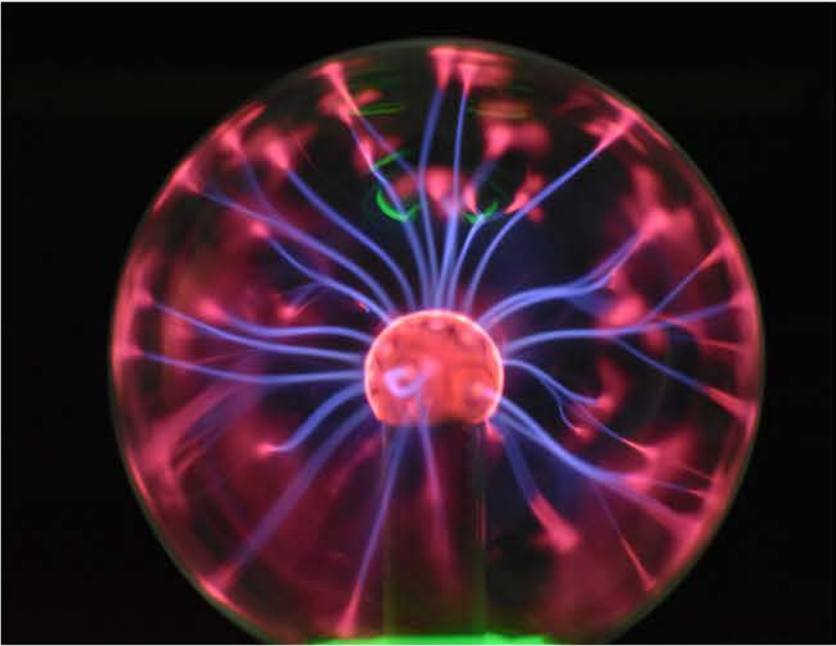
Measurements and their errors, Particles and radiation, Waves, Mechanics and materials, Electricity, Further mechanics and thermal physics, Fields and their consequences, Nuclear physics plus an option topic.

FUTURE PROSPECTS

Studying Physics at A-Level or degree Level opens up all sorts of career opportunities. For example, healthcare scientist, medical physics, higher education lecturer or secondary school teacher, research scientist (physical sciences), meteorologist, structural or acoustic engineer, product/process development scientist, systems developer, technical author. You can also move into engineering, astrophysics, chemical physics, nanotechnology, renewable energy and more. With physics, the opportunities are endless. Even if you don't decide to work in physics, studying it still develops useful and transferable skills for other careers such as Law and accountancy. You'll develop research, problem solving and analytical skills, alongside teamwork and communication. Both universities and the business sector regard all these skills very highly.

ASSESSMENT

	Paper 1	Paper 2	Paper 3
Assessment	Written Exam	Written Exam	Written Exam
Length	2 hours	2 hours	2 hours
Weighting	33.3%	33.3%	33.3%



ENTRY REQUIREMENTS

Grade 7 or above in the subject at GCSE

PSYCHOLOGY

Exam Board: AQA
Curriculum Lead: Mrs G Rai

COURSE OVERVIEW

Psychology is the science of mind and behaviour. The popular A Level Psychology course provides a broad introduction to the subject and girls find that they can apply their knowledge to everyday life. Psychology enables students to develop their essay writing and research skills. These skills are transferable and support other subject areas. Students learn to use critical analysis to argue a particular point of view with evidence.

CORE CONTENT

Paper 1: Social Influence, Memory, Attachment, Psychopathology.
Paper 2: Approaches in Psychology, Biopsychology, Research Methods.
Paper 3: Issues and Debates in Psychology and three options will be selected from a list of topics.



ENTRY REQUIREMENTS

Meets school entry requirements

FUTURE PROSPECTS

Though it is not essential for entry to a degree course, the majority of Psychology undergraduates have studied Psychology at A Level. Following a British Psychological Society (BPS) accredited course of study there are a number of postgraduate qualifications that lead to Chartered status; among these are Clinical, Educational and Occupational Psychology. The BPS website is an invaluable source of information about careers in Psychology: www.bps.org.uk. In addition, it is a particularly useful subject for careers such as Medicine, Teaching, Personnel and others that involve working closely with people.

ASSESSMENT

	Paper 1	Paper 2	Paper 3
Assessment	Written Exam	Written Exam	Written Exam
Length	2 hours	2 hours	2 hours
Weighting	33.3%	33.3%	33.3%

RELIGIOUS STUDIES

Exam Board: OCR
Curriculum Lead: Mrs L Hickman

COURSE OVERVIEW

The Religious Studies A Level course offers a combination of Philosophy, Ethics, and Developments in Christian Thought. This course encourages you to challenge the opinions of others by anticipating viewpoints and objections, and offering a critical approach to study.

ENTRY REQUIREMENTS

Grade 6 or above in the subject at GCSE including Grade 7 in English

CORE CONTENT

Students are encouraged to identify strengths and weaknesses in arguments, see several points of view, weigh up alternatives, identify key points and draw clear conclusions from complex information. In addition, students are equipped to reason logically and persuasively, discuss coherently, research efficiently, communicate effectively and distinguish between fact and assumption.



What is Philosophy and Ethics?

Philosophy deals with the big questions humans ask, such as ‘does God exist?’ and ‘why does God allow bad things to happen to good people?’ Study includes an exploration of the ancient philosophy of Plato and Aristotle, arguments for the existence of God, the nature of religious experience and how religious believers have attempted to overcome the problem of evil and suffering in the world.

Ethics looks at how humans make important decisions, such as ‘what is right?’ and whether human beings are naturally selfish. Study includes an exploration of ethical theories (religious and non-religious), and applies these theories to different ethical dilemmas such as euthanasia.

Developments in Christian Thoughts

This component of study explores developments in early Christian thinking, such as Augustine on human nature and developments in Christian eschatological teaching, to asking questions such as ‘how can we know God?’, ‘what is the significance of Christ?’ and ‘how do Christians apply these beliefs to modern day living?’

FUTURE PROSPECTS

A Level Religious Studies helps you to acquire skills that are invaluable preparation for any degree course and is highly regarded by all universities. Previous students of Religious Studies have gone on to take university degrees in a variety of subjects including Law, Medicine, Languages, English, Business Studies, Accountancy, Psychology, Theology, Philosophy and Social Work. Skills developed during the course prepare students to negotiate effectively and critically analyse texts in any discipline.

ASSESSMENT

	Paper 1	Paper 2	Paper 3
Assessment	Written Exam - Three Essays	Written Exam - Three Essays	Written Exam - Three Essays
Length	2 hours	2 hours	2 hours
Weighting	33.3%	33.3%	33.3%

RUSSIAN

Exam Board: Edexcel
Curriculum Lead: Mrs C Dhamia

COURSE OVERVIEW

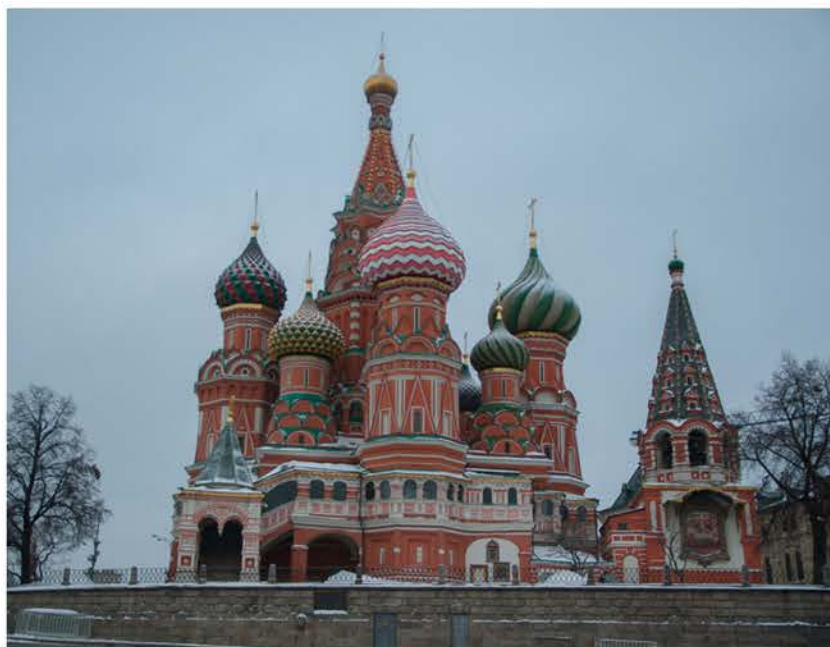
Would you like to master the intricacies of the Russian language? The A Level course is designed to give you confidence in your language skills as we return to the basics of the grammar and enable you to widen your vocabulary with the help of cartoons, pop songs, poetry, literature and film. The course gives an insight into the history and the lives of the Russian people.

ENTRY REQUIREMENTS

Grade 6 or above in the subject at GCSE

CORE CONTENT

1. The development of Russian Society
 - Life of young people in Russia – health, leisure, new technology
 - Education
 - World of work – attitudes, opportunities, equality.
2. Politics and culture in the Russian speaking world
 - The Media
 - Music, the circus, dance
 - Celebrations, public holidays, festivals and traditions.
3. Moscow and St. Petersburg
 - A culture proud of its heritage
 - Contemporary francophone music
 - Cinema: the 7th art form.
4. The last years of the Soviet Union – M S Gorbachov (1985-1991)
 - Perestroika (Reconstruction) – causes, economic changes, consequences
 - Glasnost (Openness) – causes, social changes, consequences
 - 1991 – Fall of the Soviet Union.



FUTURE PROSPECTS

A Level Russian allows you to study various courses at university, such as Russian, Slavonic Studies, Linguistics and European Studies. Russian also combines well with other languages and with other subjects such as History, Business Studies, Economics and Politics. A degree in Russian can lead to jobs in Translating and Interpreting at the highest level, including at the U.N. Russian offers opportunities for careers in Tourism, Journalism, Business, Teaching and Social Work in Russia as well as a raft of other exciting possibilities.

ASSESSMENT

	Paper 1	Paper 2	Paper 3
Assessment	Written Exam - Listening, Reading and Translation	Written Exam - Written response to works and translation	Speaking
Length	2 hours	2 hours	21-23 minutes including 5 minutes preparation time
Weighting	40%	30%	30%

SOCIOLOGY

Exam Board: AQA
Curriculum Lead: Mrs G Rai

COURSE OVERVIEW

Sociology is an exciting social science that will inspire you to think about and view the world from different perspectives. Sociology is the study of societies and human interaction within them. Sociologists try to explain what holds society together, the causes of social problems, and the reasons behind social continuity, trends and social change.

You will study a diverse and controversial range of topics, ranging from why crime occurs, what British families are like today and why, the impact of media on your conceptions of “normality”, race, gender, class and age and the impact of education and shaping your place in society. Sociology encourages you to question the way our society is organised and to realise that things are not always what they seem! You will be introduced to the methods used by sociologists and explore how people are socialised to become members of society and gain their identity.



ENTRY REQUIREMENTS

Meets school entry requirements

CORE CONTENT

Strong essay writing skills are needed to succeed in this subject as well as the ability to engage with complex material in a critical and evaluative manner. Students should also be aware of current affairs or interested in engaging more with this while studying the course.

You will study Education, Media, Families, Crime and Deviance in British society as well as research methods and theories of Sociology. Some examples of questions that will be explored are:

Why do girls do better at school than boys? Why do many of the top jobs in society go to students who have been educated at private schools and Oxford? How scientific is science? How does the construction and ownership of the media control societies views on race, class, sexuality, disability and gender? How do our police control crime? How does labelling in schools impact student performance? Who creates government social policy and how does it control and normalise certain patterns in society? Is poverty the underlying cause of crime? Why are some social groups disproportionately represented in the in the prison population?

FUTURE PROSPECTS

People who study Sociology go on into a wide variety of jobs. You will gain a range of valuable skills including how to research, argue and critique data and theories. Such skills are valuable in any work context and particularly so in careers which involve working with people.

Related courses/careers: Criminology, Law, Social Policy, Psychology, Economics, Crime Analyst, Paralegal, Law clerk, Police Officer, Journalism, Counselling, Social Service, Community Worker, Housing Manager, Information Scientist, Journalist, Lecturer, Prison Governor, Probation Services, Researcher, Teaching, Social Worker, Government Researcher, Social Researcher and Politics. Typical grade requirements to study Sociology/ a Sociology related degree are as follows: Oxbridge: A* A A, Russell Group: A B B to B B B, Non-Russell Group: A B B to C C C

ASSESSMENT

	Paper 1	Paper 2	Paper 3
Assessment	Written Exam	Written Exam	Written Exam
Length	2 hours	2 hours	2 hours
Weighting	33.3%	33.3%	33.3%

SPANISH

Exam Board: AQA
Curriculum Lead: Mrs C Dhamia

COURSE OVERVIEW

Can you communicate? Do you want to find out more about the Spanish-speaking world? The course builds on the skills acquired at GCSE, provides insight into another culture and society, provides a sound basis for further study and enhances employment prospects.

ENTRY REQUIREMENTS

Grade 6 or above in the subject at GCSE

CORE CONTENT

Aspects of Hispanic society

- Modern and traditional values
- Cyberspace
- Equal rights.

Artistic culture in the Hispanic world

- Modern day idols
- Spanish regional identity
- Cultural heritage.

Multiculturalism in Hispanic society

- Immigration
- Racism
- Integration.

Aspects of political life in the Hispanic world

- Today's youth, tomorrow's citizens
- Monarchies and dictatorships
- Popular movements.



FUTURE PROSPECTS

A degree in Spanish, or a degree in Spanish combined with another subject, can help prepare you for a career in many fields: Tourism, Education, Translating, Interpreting, Journalism, Civil Service, Administration, Marketing, Linguistics - the possibilities are endless. Spanish is widely spoken in South America as well as Spain.

ASSESSMENT

	Paper 1	Paper 2	Paper 3
Assessment	Written Exam	Written Exam	Speaking Assessment
Length	2 hours 30minutes	2 hours	21-23 minutes including 5 minutes preparatiopn time
Weighting	50%	20%	30%

THEATRE STUDIES

Exam Board: Edexcel
Curriculum Lead: Mrs E Booton-Ford

COURSE OVERVIEW

This qualification engages students through encouraging creativity, focusing on practical work which reflects 21st-century theatre practice and developing skills that will support progression to further study of drama and a wide range of other subjects.

The course has a practical focus, concentrating on the exploration of performance texts, including studying them in light of the work of theatre practitioners. The performance texts that will be studied for the exam will require you to articulate how you would perform in certain roles, design for certain scenes and interpret a text for performance, putting practical work at the heart of your work.

ENTRY REQUIREMENTS

Meets school entry requirements

FUTURE PROSPECTS

There are many career opportunities in the Creative Arts, Literature or Humanities or Design. This A Level also works well for a career in Law, Teaching or Business. Any individual seeking a career that involves public speaking, performance or analytical writing will benefit from the comprehensive Theatre Studies A Level programme of study.



CORE CONTENT

- Devising
- Text in Performance
- Theatre makers in practice

ASSESSMENT

	Component 1	Component 2	Component 3
Assessment	Devising Non-Examination Assessment	Text in Performance Non-Examination Assessment	Theatre Makers in Practice Written Examination - 2 hours 30minutes
Weighting	40%	20%	40%





Wolverhampton Girls' High School
Tettenhall Road, Wolverhampton, WV6 0BY
01902 551555
enquiries@wgghs.org.uk
www.wgghs.org.uk